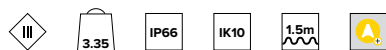
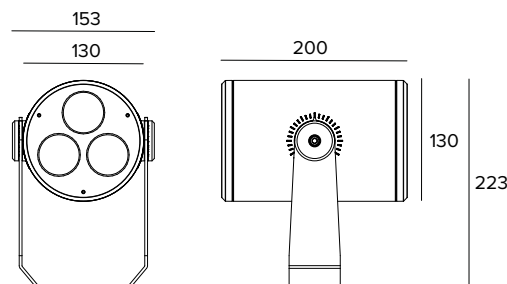


1E4040 | DART Round Medium TW

Professional adjustable LED projector



The fixture's photometric values can be found on the following pages



The figures on the drawing are expressed in mm.

SOURCE

Tunable White light module made of high power and high efficiency Ra80 LED sources. Color temperature adjustment range between 2700K and 5000K.

Energy efficiency class: F

Nominal power: 11,9W

Nominal flux: See photometries

Colour rendering index: 80

Rf: 83

Rg: 97

CCT nominal: See photometries

Lifetime (L80/B10): >50000h tq +25°C

ILLUMINOTECHNICAL CHARACTERISTICS

Equipped with precision methacrylate lenses and spreader filter.

Optic: LENS

Beam angles: SP

Optical efficiency: 59%

Fixture flux: See photometries

Luminous efficacy: See photometries

Photobiological safety: Compliant with RG1 low risk group

MECHANICAL CHARACTERISTICS

Painted die-cast anodised aluminium body and painted stainless steel mounting bracket. Tempered extra clear front glass.

Colour and finish: Ferrite

Weight: 3.35Kg

Degree of protection: IP66

Mechanical Resistance: IK10

ELECTRICAL CHARACTERISTICS

Remote electronic driver with DALI DT8 interface. The driver is housed inside an IP68 box and allows to control from 1 to 3 fixtures. All versions are pre-wired with a 1.5m long feeding cable H07RN-F (to be connected to the IP68 driver box).

Fixture Power: 12W

Power supply: 700mA

Insulation Class: CLASS 3

Driver included: NO

Ambient temperature: -25°C / +35°C

INSTALLATION

Mounting bracket with aiming adjustability. Adjustable up to $\pm 45^\circ$ on the horizontal pane and $+90^\circ/-45^\circ$ on the vertical plane.

NOTES

Casambi control system available using a dedicated accessory (only for DALI version products). Uses the "Waterblock Smart" technical solution that involves resin coating the connection cables, limiting the risk of humidity reaching the driver or the fixture. It is possible to subject the product to Cataphoresis treatment on request. 110-277Vac version available on request. Values related to the power consumption of the fixture do not take into account the consumption of the accessory driver, which depends on the choice of driver. Commissioning of the control system via free APP; the intervention of a specialist technician can be quoted on request.

WARRANTY

5 years.

WARNING

Luminaire designed for disposal/recycling at end-of-life. Replaceable (LED only) light source by a professional.

Due to the technological evolution of the electronic components, the data provided may be updated, and as such, confirmation must be requested during the order process.

Luminous flux and power supply have +/-10% tolerances with respect to the indicated value. tq +25°C (CIE 121).

We reserve the right to make technical changes.

Targetti Sankey S.r.l.
Via Pratese, 164
50145 Firenze - Italy
Tel: +39 055 37911
targetti.com
targetti@targetti.com

CCIAA Firenze
Share Capital:
€ 500.000,00
VAT N. (IT):
01537660480
R.E.A: FI-275656

TARGETTI

1E4040 | DART Round Medium TW Professional adjustable LED projector



5000K		H(m)	D(m)	Emax(lx)		
Ra80			14°			
Fixture Power	12W	1	0.25	12426		
Source Flux	1608lm	2	0.50	3107		
Fixture Flux	943lm	3	0.75	1381		
Efficacy	79lm/W	4	1.00	777		
TS1677	I _{max} =7728cd/klm	I _{max}	12426cd	5	1.25	497



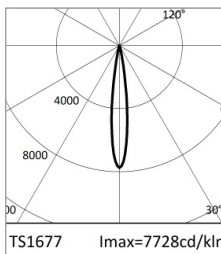
3850K		H(m)	D(m)	Emax(lx)		
Ra80			14°			
Fixture Power	12W	1	0.25	12681		
Source Flux	1641lm	2	0.50	3170		
Fixture Flux	963lm	3	0.75	1409		
Efficacy	81lm/W	4	1.00	793		
TS1677	I _{max} =7728cd/klm	I _{max}	12681cd	5	1.25	507

CW

CCT nominal	5000K
Nominal flux	1608lm
Fixture flux	943lm
Luminous efficacy	79lm/W

NW

CCT nominal	3850K
Nominal flux	1641lm
Fixture flux	963lm
Luminous efficacy	81lm/W



2700K		H(m)	D(m)	Emax(lx)		
Ra80			14°			
Fixture Power	12W	1	0.25	10687		
Source Flux	1383lm	2	0.50	2672		
Fixture Flux	811lm	3	0.75	1187		
Efficacy	68lm/W	4	1.00	668		
TS1677	I _{max} =7728cd/klm	I _{max}	10687cd	5	1.25	427

WW

CCT nominal	2700K
Nominal flux	1383lm
Fixture flux	811lm
Luminous efficacy	68lm/W

Due to the technological evolution of the electronic components, the data provided may be updated, and as such, confirmation must be requested during the order process. Luminous flux and power supply have +/-10% tolerances with respect to the indicated value. tq +25°C (CIE 121).

We reserve the right to make technical changes.

Targetti Sankey S.r.l.
Via Pratese, 164
50145 Firenze - Italy
Tel: +39 055 37911
targetti.com
targetti@targetti.com

CCIAA Firenze
Share Capital:
€ 500.000,00
VAT N. (IT):
01537660480
R.E.A.: FI-275656

TARGETTI

1E4040 | DART Round Medium TW

Professional adjustable LED projector

Related codes

Power Supply

Code

1E4056

Tunable White DALI driver - 700mA.
50W, LxHxP=220x80x120mm, 110-277Vac.
IP68 gray powder coated aluminum box.

Accessories

Filter



Colour

Code

**1E4263**

Blade of light filter.
PMMA holographic filter for a blade of light effect.
Completed with powder coated aluminum alloy holder ring.

Screen



Colour

Code

**1E4007**

Asymmetric screen.
Powder coated stainless steel.

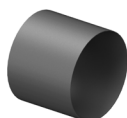


Colour

Code

**1E4008**

Cylindrical screen.
Powder coated stainless steel.
Short version.



Colour

Code

**1E4058**

Cylindrical screen.
Powder coated stainless steel.
Long version.

Mounting System



Colour

Code

**1E3026**

Plate for fixture rotation.
Powder coated stainless steel.

Dimensions
ØxH mm

Colour

Code

96x182

**1E3028**

Earthspike.
Powder coated stainless steel.

Due to the technological evolution of the electronic components, the data provided may be updated, and as such, confirmation must be requested during the order process.
Luminous flux and power supply have +/-10% tolerances with respect to the indicated value. tq +25°C (CIE 121).

We reserve the right to make technical changes.

Targetti Sankey S.r.l.
Via Pratese, 164
50145 Firenze - Italy
Tel: +39 055 37911
targetti.com
targetti@targetti.com

CCIAA Firenze
Share Capital:
€ 500.000,00
VAT N. (IT):
01537660480
R.E.A.: FI-275656

TARGETTI

1E4040 | DART Round Medium TW

Professional adjustable LED projector

Mounting System



Colour Code

● 1E2825

Pole bracket.
Anodised and powder coated aluminium.
Pole Ø 60mm (+/-2mm).



Colour Code

● 1E3027

Pole multiple mounting system.
Powder coated stainless steel.
To be completed with 1E2825.
Max 4 projectors.

Connector



Code

1E2769

Linear connection box IP66/IP68.
5 poles max. wire section 1.5mm².
Cable diameter range from 7 to 12mm.



Code

1E2494

Multiple connection box IP68.
1 IN - 3 OUT 4 poles max. wire section 2.5mm².
Cable diameter range from 6 to 12mm.

Control systems



Code

1E3048

IP67 wireless control unit with DALI interface.
It generates a local DALI2 bus, enabling a direct connection to a DALI interface LED driver.
The module can only be used in a closed system and cannot be connected to an existing DALI network.
The module is wireless controlled using a Casambi app for smartphones and tablets using Bluetooth 5.0 technology.
The devices automatically create an adaptive, robust, and reliable wireless mesh network, allowing for the easy and efficient management of a high number of fixtures. The control unit is preset to the DALI 1CH profile, meaning the device can control a single DALI driver with broadcast commands.
In addition to the DALI broadcast, other operating modes are available, such as:

- Button (normally open)
- Control unit 0/1-10V
- Control unit DALI Tunable White DT8
- Presence sensor



Code

1E4369

IP67 Extender for wireless control of LED driver with dimming DALI interface based on Casambi technology.
It has a DALI2 output with the capacity to control up to 40 lighting fixtures.
With the addition of a further external BUS DALI power supply it is possible to control up to 64 fixtures.
IP67 Extender is preset to the DALI broadcast profile, meaning all the luminaires connected to it are dimmable at the same level.
In addition to the DALI broadcast other operating modes are available, such as:

- EXTENDER DALI 8CH
- EXTENDER DALI Tunable White
- EXTENDER DALI 4CH
- EXTENDER DALI DT8 Tunable White

Due to the technological evolution of the electronic components, the data provided may be updated, and as such, confirmation must be requested during the order process.
Luminous flux and power supply have +/-10% tolerances with respect to the indicated value. tq +25°C (CIE 121).

We reserve the right to make technical changes.

Targetti Sankey S.r.l.
Via Pratese, 164
50145 Firenze - Italy
Tel: +39 055 37911
targetti.com
targetti@targetti.com

CCIAA Firenze
Share Capital:
€ 500.000,00
VAT N. (IT):
01537660480
R.E.A: FI-275656

TARGETTI